

NORTHWOOD 244

If you love indoor/outdoor living, you're sure to love the Northwood. Designed with an orientation towards the outdoor, the Northwood makes the most of natural light to create bright sunny rooms. Forming the central hub of the home, the interconnected kitchen and dining area open directly out to the central courtyard through two sets of sliding glass doors. The three bedrooms and main bathroom are located off a separate hallway, which provides a defined separation of living and sleeping areas. The master suite offers the luxury and convenience of a spacious ensuite and twin built in robes.



4



2



2



BELFORD FAÇADE



RICHMOND FAÇADE



HYDE FAÇADE



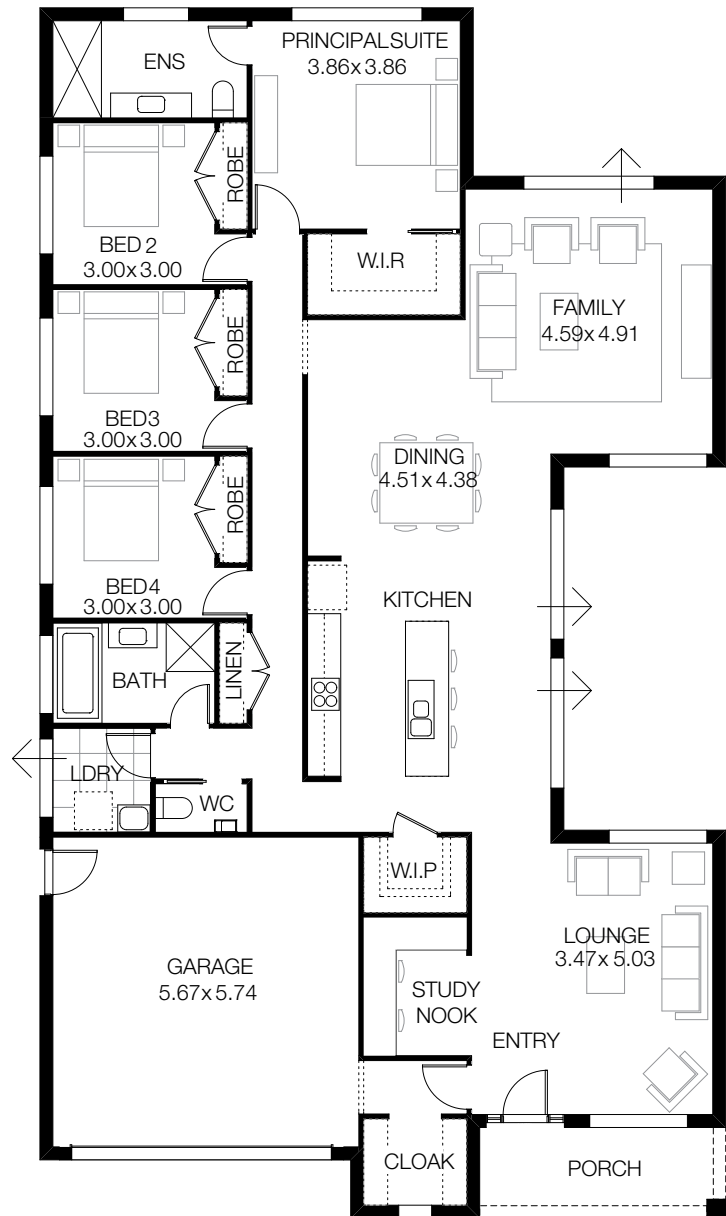
OXLEY FAÇADE



GREENDALE FAÇADE

NORTHWOOD 244

MIN LOT WIDTH	15m	
MIN LOT DEPTH	30m	
HOME WIDTH	12.71m	
HOME LENGTH	22.43m	
RESIDENCE	201.10sqm	21.64sq
PORCH	7.70sqm	0.82sq
GARAGE	35.30sqm	3.79sq
TOTAL	244.10sqm	26.27sq



“WITH OVER 30 YEARS’ EXPERIENCE, BURBANK OFFERS EXCEPTIONAL SERVICE, OUTSTANDING QUALITY AND A WIDE RANGE OF HOME SOLUTIONS TO SUIT EVERY LIFESTYLE. BURBANK’S MISSION IS TO CREATE PLACES FOR PEOPLE TO CALL HOME.”

Jarrod Sanfilippo
Managing Director

*Copyright conditions. All photos and illustrations are representative only. Floor plans and specifications may be varied by Burbank Australia Pty Ltd (“Burbank”) without notice, the dimensions are diagrammatic only and a Building Contract with final drawings will display correct dimensions and detail. All designs are the property of Burbank and must not be used, reproduced, copied or varied, wholly or in part without written permission from an authorised Burbank representative. Copyright Burbank Australia (NSW) Pty Ltd. ABN 88610822770.



Call 13 BURBANK Visit burbank.com.au

Burbank 
#noplacelikehome